

# Japanese Committee of ICSB (JICSB)

**Its Present  
outline and  
activities**



**June 11, 2014**

Professor Itsutomo MITSUI, President of JICSB

# Outline

- The Japanese Committee of International Council for Small Business(JICSB) was established in November 2011 and certified as an successor of the Japanese Affiliate of ICSB in June 2012.
- The number of JICSB member is 71 as of May 1,2014.  
One supporting member and 70 Individual members
- Thanks to the donation of the 118<sup>th</sup> committee, the financial basis is strong, but weak yen rate put us in a financially unsettled state.
- Membership development is essential. The potential size of membership is not small , we will redefine the values for present and potential members.

# 1. Revitalization of the affiliate

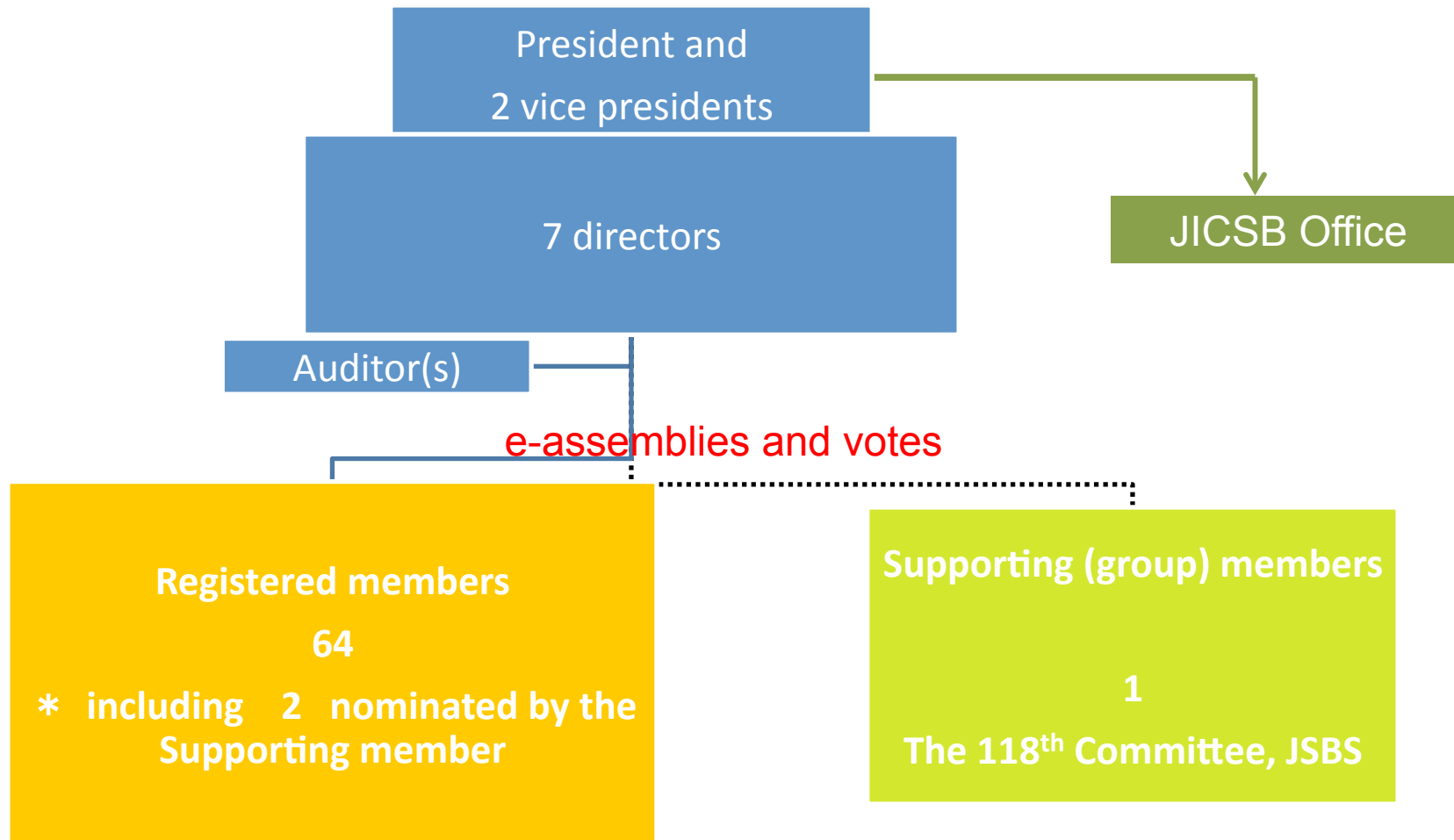
- Once existing ICSB Japanese Affiliate became inactive, and finally suspended, with its former director Mr. Masayoshi Fukuda's expressing resignation
- Its failure was mainly due to its rather low profile in Japanese academic community and public bodies, which also accelerated its weaker financial base
- Public bodies and SME organisations were mainly supporting ISBC for years, and it was necessary to lay the base in the academic community to reorganise the Japanese Affiliate of ICSB
- The representing academic society, JASBS was once intending to take the responsibility of reorganising Japanese Affiliate, but it was not so easy
- Finally, an active and financially stable academic organisation, 118th Research Committee of the JSPS, took charge of the business, under Professors Minato, Mitsui, Okamuro and Kato's initiatives.
- The ICSB board certified JICSB as an successor of the Japanese Affiliate of ICSB in June 2012.

## The 118th Committee, JSPS and JICSB

- The 118th Committee (the 118th Committee on Industrial Structure: Small and Medium Business, Japan Society for the Promotion of Science) keeps enough research fund, and a long and prominent history of 60 years, which was founded by Late Professor Tokutaro YAMANAKA
- It also keeps tight business-academia collaboration for decades, with SME organizations and financial institutions, including NFSBA and Shoko Chukin Bank (Bank for Industrial and Commercial Associations)
- Successive JASBS presidents for 3 decades have been mostly the 118 Committee members as well
- 118 Research Committee is very committed to establish, sustain and develop the branch organization and activities of the ICSB in Japan

## 2. Present

### 2.1 Organizational structure



# JICSB Executive board members for 2012–2014

## **President:**

Professor Itsutomo MITSUI (Graduate School of Business Innovation, Kaetsu University/ Professor Emeritus, Yokohama National University)

## **Vice Presidents:**

Professor Hiroyuki OKAMURO (Graduate School of Economics, Hitotsubashi University)

Professor Atsushi KATO (Faculty of Contemporary Social Studies, Doshisha Women's College of Liberal Arts) \*in charge of general affairs and JICSB office

## **Directors:**

Professor Tsuguo IDE (former Graduate School of Business, Nihon University/ former Honorable International Secretary of ISBC);

Professor Miki TAKAHASHI (Faculty of Business and Commerce, Keio University);

Professor Noriyuki TAKAHASHI (Faculty of Economics, Musashi University);

***\* In charge of the ACSB affairs***

Professor Shumei ZHANG (Faculty of International Welfare Development, Nihon Fukushi University)

**Auditor:** Professor Tetsuo MINATO (Professor Emeritus, Aoyama Gakuin University/ former Chairperson of the 118th Research Committee, JSPS)

# Executive members



President I. MITSUI



Vice Presidents H. OKAMURO & A. KATO



Directors T. IDE, N. TAKAHASHI, M. TAKAHASHI & S. ZHANG

*\*in charge of the ACSB affairs*



Auditor T. MINATO

## 2.2 History in 2012–2013

| Date                | Fact   | Place                    |  |
|---------------------|--|--------------------------|--|
| November 21, 2011   | Establishment of JICSB   | Shoko Chukin Bank, Tokyo | Number of Members : 21                 |
| June 10, 2012       | The CSB Board, certified us as an affiliate of ICSB.                               | Wellington ,New Zealand  |  |
| August 27- 28, 2012 | Workshop on SMEs 2012<br>Agenda : Newly Developed Inter-firm Networks and SMEs     | Heartpia Atami, Shizuoka | Co-hosted by the 118th Committee, JSPS |
| August 27, 2012     | JICSB Organization General Meeting   | Heartpia Atam, Shizuoka  |  |
| Ocober27, 2012      | Exchange with the KASBS  | Sogang University, Seoul | Pres. Mitsui made a presentation       |
| August 28- 29, 2013 | Workshop on SMEs 2013<br>Agenda : New stage of the Globalization and Japanese SMEs | Heartpia Atami, Shizuoka | Co-hosted by the 118th Committee, JSPS |



# Latest developments

- June 2013, JICSB Vice President Kato attended the ICSB World Conference in Puerto Rico and its board meeting, and contributed to the completion of the ACSB By-Law
- JICSB officially approved its membership to the ACSB and decided to cooperate fully with the ACSB Inaugural Conference in Seoul
- October 2013, some 11members attended the Seoul Conference

- JICSB recommended its ACSB Board member, Professor Noriyuki Takahashi, as well as the vice editor of the new academic journal

# WORKSHOP 2013

## New stage of the Globalization and the Japanese SMEs

- DATE : August 28 (Wed.) – August 29 (Thu.) , 2013
- VENUE : Heartpia Atami, Shizuoka
- Co-hosted by the 118th Committee, JSPS
- Keynote

Internationalization of Japanese Small Business and the  
Global Economy

Yasuyuki Todo (University of Tokyo)

- Session 1 , Session2

Internationalization of SMEs: A Review and Research Agenda

Kenji Kawai ( University of Sussex, UK )

and other three presentations.

25 members and guest speakers  
attended



# Guest Speakers

**Dr. N. Kawai, Sussex University**



**Professor Y. Todo, University of Tokyo**



# WORKSHOP 2014; August 26-27

- The 2014 Workshop is planned, inviting the ACSB President Professor Kim Ki-Chan
- Again it will be a joint program of JICSB and 118 Committee
- Details will be announced later
- The 2<sup>nd</sup> ACSB Conference is expected on October 27-31 2014

# Exchange with the KASBS and ACSB

- On October 27, 2012, JICSB President Mitsui was invited to the Korean counterpart, KASBS, attending its national conference at the Sogang University, Seoul, and met Professor Kim Ki-Chan and prominent colleagues.
- Prof. Mitsui made a presentation about the globalization of Japanese SMEs and academic studies.

<http://www2.odn.ne.jp/mitsui05/imitsui/MitsuiKASB2012c.pdf>

- Dr. Tarabishy also attended, and his idea of organizing an Asian Council among Korea, Taiwan, China and Japan at the first stage was welcomed, and this idea was materialized at the 2013 ICSB Conference as the **ACSB**.
- Obviously the Korean organization is well established and powerful, with keeping strong ties with the ICSB, and JICSB must learn a lot.

# ACSB and JICSB

- Korea led the ACSB foundation, which was mentioned before, the Asian regional organization of the ICSB
- In October 2013, JICSB board members attended the ACSB Inaugural Conference in Seoul, as well as Mr. Tsuruta, President of National Federation of Small Business Associations and Mr. Kitagawa, Chief Secretary of Japan SME Agency
- JICSB promised its full commitment to the ACSB activities



# ACSB Inaugural Conference (Seoul in 2013)



## 2.3 Membership

- Members of the JICSB committee *“comprise individuals who are interested in small business studies and participate in the ICSB”*.

- As of May 2014

Supporting member 1 The 118 Committee

The supporting member nominates 2 members.

Individual Members 70

- Membership fees, \5,000 per each
- Web registration system is open, and the executive board members are planning the membership to be doubled by the end of 2014, compared with the original size, which will be necessary for stable activities and solid financial basis. Nevertheless, the growth rate is 10% in 2 years since its foundation.

## 2.4 Finance

### Summary of the statement of accounts 2013

|   |            |
|---|------------|
| • <b>Revenue:</b>   | \1,087,000 |
| • Balance brought forward, including the Supporting membership ( 'Kick off' fund donation from the 118 Committee) |            |
|   | \780,000   |
| • Membership fees, \5,000 per each  | \305,000   |
| • <b>Expenditure:</b>   | \1,097,000 |
| • ICSB membership fees 64members  | \194,000   |
| • Office cost   | \ 220,000  |
| • <b>the balance brought forward</b>  | \741,000   |

# Ties and partnerships with other organizations

- Key sponsor: 118 Research Committee, JSPS
- Its collaborating partners: Shoko Soken (Research Institute of Shoko Chukin Bank); NFSBA (National Federation of Small Business Associations)
- Unofficial tie with academic societies: JASBS (Japan Academy of Small Business Studies), and some others, i.e. JASVE
- \* The governmental think tank, JSBRI was dissolved in October 2013, and most research activities were transferred to the SMRJ (SME Support, Japan).



# 33<sup>rd</sup> JASBS Annual Conference (Nagoya) and JICSB's promotion desk



The publication of an academic review project  
***“SME Studies in Japan 2000-2009” (2013) in 2 Volumes***

日本の  
中小企業研究  
2000-2009  
第 1 卷  
[成果と課題]

財団法人 中小企業総合研究機構 [編]  
編集代表 三井 逸友

同友館

- JSBRI sponsored the project for 3 decades, publishing 4 successive versions, and most editorial members and writers of the 4<sup>th</sup> project are JICSB members, headed by Professor Mitsui

### 3. Future

Membership development is essential .

- The declining Yen value makes it difficult for us to allow considerable margins within the JICSB budgets. The ratio of compulsory expenditure per member for ICSB contribution may exceed ¥2500 (100 JPY/US\$), including the cheaper Yen rate against US\$ .
- The potential size of membership is not small , we will redefine the values for present and potential members. One of the targeted resources is the members of JASBS, the academic society for SME studies in Japan, which keeps more than 500 members.

# Cost and Value for members

- Cost : 5000 JPY/ year  
cf. JPY/US\$ market , paper delivery of the JSBM
- Needs : Create Global Knowledge and Global Network
- Value : estimate of our service capacity to satisfy their needs
  - ICSB membership
    - Subscription to the JSBM, Access to the ICSB Database
  - As an JICSB member
    - Workshop
    - Information sharing ( mail magazine, etc. )
    - Asian network



# Thank you for Listening !

- WEB <http://www.jicsb.org/>

- JICSB Office

c/o Professor Kato's office

FCSS, Doshisha Women's College of Liberal Arts,  
Kodo, Kyo-Tanabe City, Kyoto 610-0395, Japan

PHONE 0774-65-8767 /FAX 0774-65-8767

E-mail: [kato@jicsb.org](mailto:kato@jicsb.org)

<http://www.jicsb.org/>